



HORSLEY HERALD



Phone: 96201301 Fax: 96201791

Web: www.horsleypk-p.school.nsw.edu.au

Email: horsleypk-p.school@det.nsw.edu.au

Principal's Message

This week has seen some changes to many schools throughout the country. Schools have been directed by the Department of Education to take proactive measures to limit the impact of COVID-19 in or schools.

We continue to work closely with NSW Health and the Australian Government to monitor and respond to developments and to ensure the safety and wellbeing of students and staff.

Our school has adopted social distancing measures including cancelling or postponing:

- assemblies, events, excursions, travel and conferences
- parent teacher interviews
- initiative activities and events (including inter-school events involving three or more schools)

Horsley Park PS has also implemented a range of other strategies to reduce transmission, including the promotion of personal hygiene measures including handwashing, cough and sneezing etiquette.

We encourage parents to support our school to follow the recommendations given to us by NSW Health. If your child is unwell with a fever, cold or flu symptoms, please keep them at home until symptoms clear up. Also, if you have returned from overseas after Sunday 15th March you and your family are to remain in quarantine for 14 days.

Learning from Home if required

At this stage our school remains open for learning, where quality educational programs are being offered, however we have a small number of students who have specialised healthcare requirements and may be required by their doctor to learn from home. Parents and Carers are encouraged to follow the link for information about Learning from home.

<https://education.nsw.gov.au/teaching-and-learning/curriculum/learning-from-home>

Any further updates or information will be distributed immediately to parents. Should you have any questions or concerns please contact the school on 02 96201301 or visit the school website for the latest information. Have a happy and healthy weekend.

Anica Tanevski
Relieving Principal

What's On?

Week 8/9

- 17/3 Scripture cancelled
- 18/3 IEP Interviews
- 20/3 High School Forms Due
- 20/3 Mindfulness

Week 10

- 24/3 Harmony Day – mufti only
- 24/3 Scripture cancelled
- 25/3 Junior AECG – Leppington PS - postponed
- 30/3 Parent Workshop on Multi-Age Classes - postponed
- 1/4 Parent Interviews – school hall – postponed
- 3/4 Mindfulness

Week 11

- 9/4 Easter Hate Parade – cancelled
- 8/4 P&C Raffle Draw
- 8/4 Year 6 Cake Stall – TBA
- 9/4 Last day of Term 1

Future Focused Learners at Horsley Park PS

As part of the New South Wales Department of Education Strategic vision 2018 -2022: *To be Australia's best Education system and one of the finest in the world.* A clear purpose and embedded priority is to prepare young people for rewarding lives and engage in a complex and dynamic society. With the need to equip our students for the world of tomorrow, future focused learners is also a significant milestone in our Horsley Park school plan and reflects these government initiatives. What does being able to equip Horsley Park public school students as future focus learners mean and look like?

The changes that have occurred in education in the past few years require new and innovative design responses to rethink how schools work, how teachers teach and how students learn, now and into the future. To succeed in the future our students will require, research, problem-solving and critical thinking skills. They will need to work independently and together with groups of other students.

The spaces our children learn in need to be more flexible with the innovative integration of new technology and better opportunities for student/teacher collaboration. Due to the success of a government grant last year our school has purchased 21 new iPads and 10 new student notebooks.

Technology Event at Horsley Park PS – Ignite Creativity with iPad

On Wednesday 11th March, students from Stage 2 and Stage 3 participated in a 'Technology Event' at school. The Apple Education Team visited our school and provided students with lessons in Apple apps and students and teachers made movies. We had a lot of fun learning and participating in the innovative, creative workshops.



Horsley Zone Swimming Carnival

On Thursday 27th February, students from Horsley Park PS participated in the Horsley Zone community of schools swimming carnival at Prairiewood Leisure Centre. All our student enjoyed their day and have been successful in their swimming heats and races including breaststroke and backstroke. Thank you to Mr Obeid who coordinated our students on the day. Everyone was on their best behaviour and represented our school very well Our school performed exceptionally well.

Thank you to all the parents who came and supported on the day and congratulations to students Milani, Yorke, Scarlett, Isabella and Charlize who qualified to the Zone.

Well done athletes!



Tell Them from Me student feedback survey 2020

I am delighted that this term, our school, like many other public schools in the state, will participate in a Department of Education initiative: the *Tell Them from Me* student feedback survey. The survey measures factors that are known to affect academic achievement and other student outcomes. The focus of the NSW-wide survey is on student wellbeing, engagement and effective teaching practices.

More information about the survey is available at: <http://surveys.cese.nsw.gov.au>

The survey is a great opportunity for our students to provide us with valuable and quick feedback on what they think about school life, how engaged they are with school and the different ways that teachers interact with them. More than 6,300 schools in Australia and around the world have used *Tell Them from Me* to survey 5.4 million students. Capturing the voices of our students will help improve how we do things at our school.

I want to assure you that the survey is confidential. The survey is conducted online and will typically take less than 30 minutes to complete. It will be administered during school hours between 11 March and 12 April. Participating in the survey is entirely voluntary.

A consent form and FAQs for parents/carers about the survey will be sent home with students. If you do not want your child or children to participate, please return the form to school by 27th March 2020. Copies of the form and FAQs are available from: <http://surveys.cese.nsw.gov.au/information-for-parents>

P&C

Our school P&C will be selling raffle tickets for the Easter Raffle draw. Two prize winners will be drawn one for (K-2) & and one for (3-6) on Wednesday 8th April.

\$1 for 1 ticket (More information coming soon).



P & C Easter Raffle donations

Thank you to all the children & families that have donated to the Easter Raffle.

There's still time to bring in the yummy chocolate
Thank you for your support

SCHOOL INFORMATION

PBL Wks 7 & 8



This rule is not only part of our SAFE rule but also our ACTIVE LEARNER.

We need to

- Take action
- Look after ourselves and others
- Be a problem solver

Voluntary Contributions 2020

What is a voluntary school contribution?

This is a voluntary payment from parents that is requested each year by schools to supplement existing funding. Our school relies on these contributions to provide additional resources to ensure our students have the best possible learning opportunities and learning environment.

How Much?

The voluntary contributions are set at:

- \$35 for one child;
- \$60 for two or more children at HPPs

Update of Information Booklet Reminder

Thank you to all the parents that have returned their completed booklets. It is very important that ALL the permission forms and the health and contact details are completed, signed and returned to school. It would be much appreciated if the booklets could be returned to school by this FRIDAY.

Why it's worth going to parent-teacher interviews

Parent-teacher interviews give you a great opportunity to:

- learn more about your child's academic, emotional and social development
- meet and get to know your child's teachers
- help your child's teachers understand more about your child
- make plans with the teacher about how you can both support your child

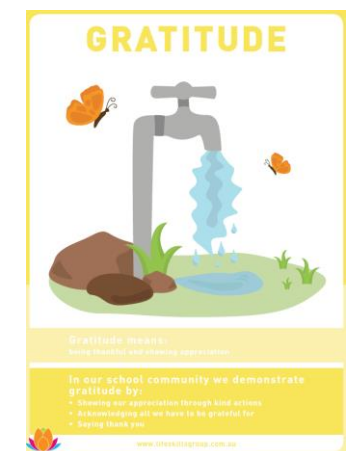
Having a personal interview allows us the necessary time to discuss your child's individual progress and set goals for the following term.

High School Expression of Interest Application Forms

Parents received the High School Expression of Interest Application Forms and advice on how to complete the form.

ALL High School Expression of Interest Application Forms will need to be completed and returned to school by Friday 20 March 2020

Mindfulness Week 7 & 8



Lost Property & Clothing

Please make sure you label all items of clothing and check the lost property bin (located outside the office) on a regular basis. It contains many items that do not have names on them.

Take a peek in

K/6 Kukui have had an amazing start to Kindergarten/Year One this year and have settled in beautifully. We are learning how to follow class and school routines with growing independence. Over the last seven weeks, we have enjoyed this time getting to know our lovely class members and have made new friends too.

The students have participated really well in many new activities and have demonstrated they are keen to learn. One of our favourite learning activities is Jolly Phonics and we look forward to learning a new sound each week. We have learnt new letter sounds already and have made some wonderful art activities to reinforce our learning.

I look forward to have seeing all the parents again at the upcoming Goal Setting meeting day.

Miss Kas

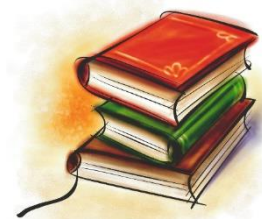


BEFORE AND AFTER SCHOOL PROCEDURES

In the interest of Horsley Park PS student safety we insist that the following procedures be observed before and after school:

- Parents are requested not to park in the school carpark area but park outside the school grounds and walk into the school to collect/drop off their child/children. Please do not use the Kiss and Drop area to park. This is for drop off / pick up only.
- If students arrive before 8.45am, they are to forward immediately to the seats under the shelter shed and remain seated until a teacher is present, on duty. No ball games of any kind are permitted and the grass area is out of bounds. Please note that there is no supervision until 8.45am. **At all times outside of these hours no supervision will be provided.**
- In the afternoon parents who pick up their child/children are requested to collect them from the playground area at 3.00pm.
- Students are not permitted to wait on Walworth Road or The Horsley Drive or leave the school grounds, unless accompanied by parent/ guardian/ an authorised adult or have written permission from parents to walk home unaccompanied.
- Students going home by bus are instructed to move to the Italian Room stairs and wait for a teacher. A staff member will supervise these students inside the classroom and escort them to the buses when all three buses have arrived.
- Students accessing Kiss & Drop are to meet outside the 3/4 classrooms. The Principal/ Executive or Staff member will accompany the students to the Kiss & Drop area and supervise the students.
- Any students at school who have not been collected promptly by their parents or caregivers will also walk to the Kiss & Drop area, under the supervision of the staff member on duty.
- Any students at school who have not been collected by their parents or caregivers following the Kiss & Drop Duty (approx. 3:10 pm) will be escorted to the School Office. Parents/ guardians are asked to come to the office to collect and sign out the student. Parents/guardians will be contacted if the student has not been collected by 3:30pm.
- On the odd occasion that a parent / guardian is unable to collect their child at 3:00pm, the procedure is as follows:
 1. Call the school office on 9620 1301
 2. Inform the school whom will be collecting your child.
 3. Parent / Guardians will be required to collect and sign out the student from the front office.





The Reading Corner

The Premier's Reading Challenge (PRC) aims to encourage a love of reading for leisure and pleasure in students, and to enable them to experience quality literature. At Horsley Park Public School, we promote this challenge for students not as a competition but as a challenge for each student to read more and to read more widely. This term we have already started logging in books for the Premier's Reading Challenge. The new student site is active and very easy to use. There is a link on our Library Oliver page to take students directly to the PRC website. When students are borrowing I encourage students to look for the PRC stickers on the spine of books. If your child has a pink note at home please return the permission slip so each student who completes the challenge can receive their certificate at the end of the year. Students from K-2 do not have to complete the challenge independently as teachers have books in their classrooms.

Please come and see me for any questions.

This is the look of the student site

Stickers on the spine of PRC books



Have a great week
Mrs Basak